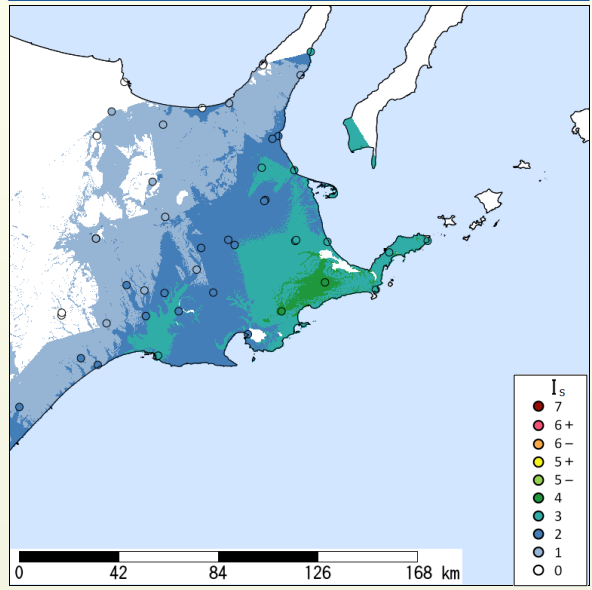


**Epicenter Location is Undetermined**

**I<sub>s</sub> Distribution Maximum Observed I<sub>s</sub>:4**



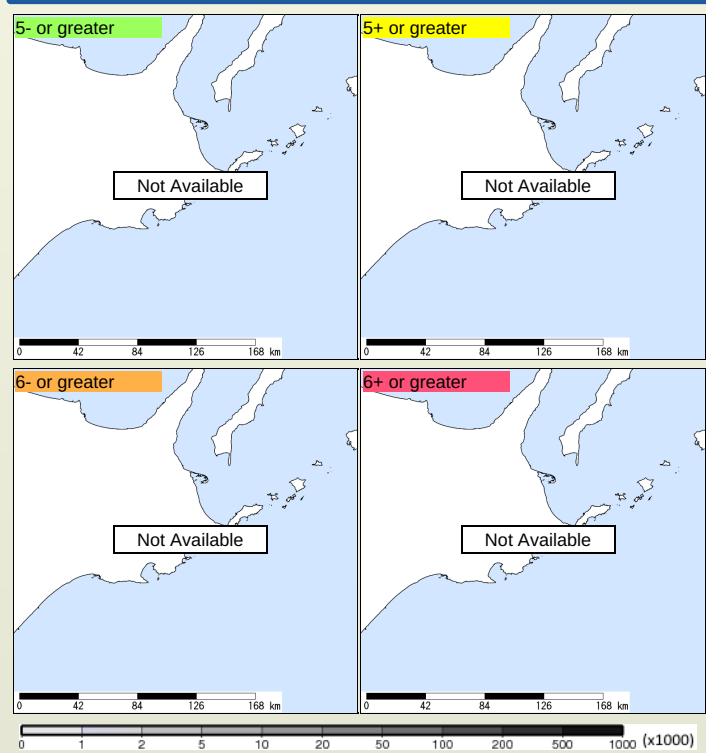
Seismic Intensity (I<sub>s</sub>) distribution is estimated from the observed data (circles) of NIED K-NET, KiK-net, JMA, and local governments that had been collected by 2025/10/22 18:19:28.

**Estimated I<sub>s</sub> for Major Cities**

Max. Obs. I <sub>s</sub>	Histogram of Estimated I <sub>s</sub>	Municipality	Daytime Distance Population [km]
4	1 2 3 4 5-5+ 6- 7	Nemuro, Hokkaido	28,000 Unknown
3		Kushiro, Hokkaido	170,000 Unknown

The histogram shows frequency distribution of estimated I<sub>s</sub> derived from interpolation of the observation with 250-m mesh. The daytime and nighttime correspond to 9:00-18:59 and 19:00-8:59, respectively. The distance is measured from the epicenter to the center of the municipality.

**I<sub>s</sub> Exposed-Population Estimates of Each City**



Population exposed to I<sub>s</sub> 5- or greater are not estimated.

**Major Historical Damaging Earthquakes in This Region**

Historical earthquakes are unavailable until the epicenter is determined.

**Seismic Hazard Information of J-SHIS**

J-SHIS is a Web service by NIED, to help prevent and prepare for earthquake disaster by providing a public portal for seismic hazard information across Japan.

I<sub>s</sub> Distribution of 2% Probability of Exceedance in 50 Years      I<sub>s</sub> Distribution of Return Period of 50,000-year

