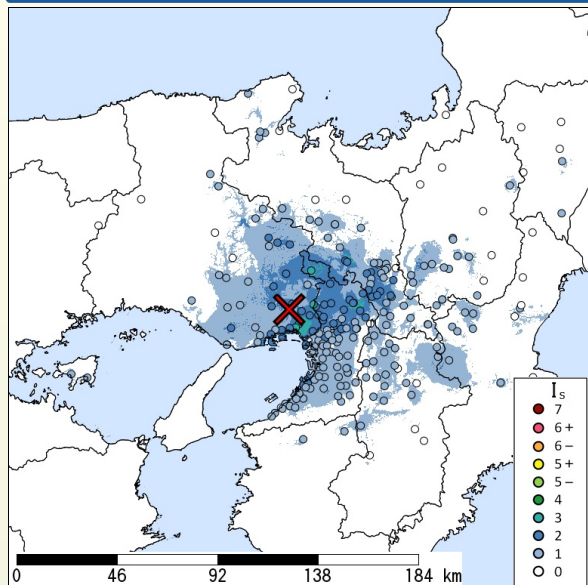


2022-09-24 03:34 (UTC+9), SE HYOGO, 10km Depth, M 4.0 by JMA

I_s Distribution Maximum Observed I_s:3 Estimated I_s for Major Cities

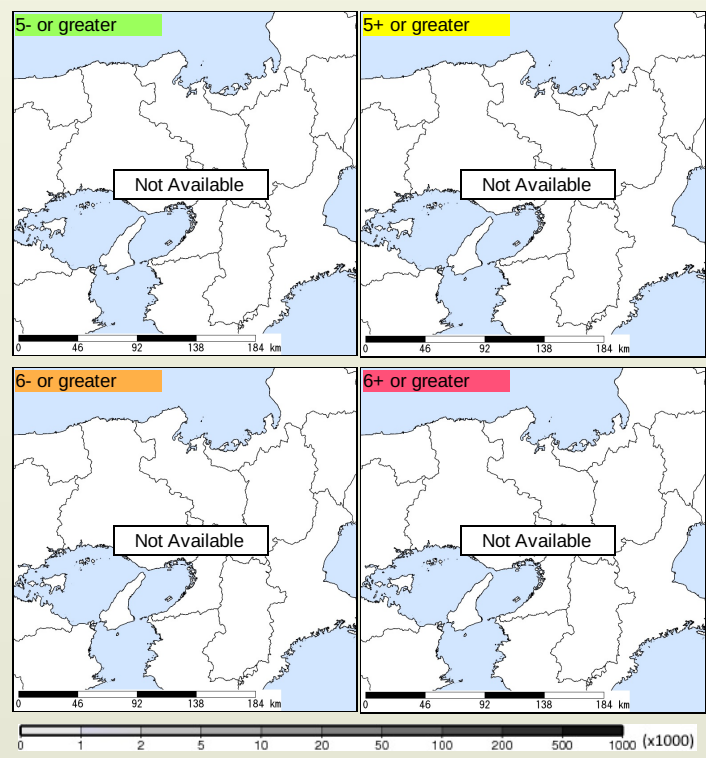


Max. Obs. I _s	Histogram of Estimated I _s	Municipality	Nighttime Population	Distance [km]
	1 2 3 4 5-5+6-6+7			
3		Nishinomiya, Hyogo	480,000	7
3		Kawanishi, Hyogo	150,000	11

The histogram shows frequency distribution of estimated I_s derived from interpolation of the observation with 250-m mesh. The daytime and nighttime correspond to 9:00-18:59 and 19:00-8:59, respectively. The distance is measured from the epicenter to the center of the municipality.

Seismic Intensity (I_s) distribution is estimated from the observed data (circles) of NIED K-NET, KiK-net, JMA, and local governments that had been collected by 2022/09/24 03:44:13.

I_s Exposed-Population Estimates of Each City



Population exposed to I_s 5- or greater are not estimated.

Major Historical Damaging Earthquakes in This Region

Year	Region	M	Damage
1925	Northern Hyogo	6.8	Tajima Earthquake, 428 dead, 1,295 houses collapsed, 2,180 houses collapsed from fire around the Maruyamagawa River. Two small faults (the length 1.6 km) were formed.
1927	Northern Kyoto	7.3	Kita Tango Earthquake, 2,925 dead, 12,584 houses collapsed (5,105 houses, 7,478 non-residential houses). Goumura fault (a length of 18 km, the maximum horizontal displacement 2.7 m) and Yamada fault (a length of 7 km), which is perpendicular to Goumura fault, were formed by the earthquake.
1936	Nara	6.4	Kawachi Yamato Earthquake, 9 dead, 6 houses collapsed, 53 partially destroyed.
1948	Kii Channel	6.7	2 dead, 60 houses collapsed.
1952	Nara	6.7	Yoshino Earthquake, 9 dead, 20 houses collapsed.
1963	Off Fukui	6.9	Echizenmisaki-oki Earthquake, 2 houses collapsed, 4 partially destroyed.
1995	Awajishima Island	7.3	Hyogoken Nanbu Earthquake. Many timber houses, RC and steel framed buildings, expressways, and railways, including Shinkansen, collapsed, 6,434 dead, 3 missing, 43,792 injured, 104,906 houses collapsed, 144,274 partially destroyed, 7132 completely or partially destroyed by fire.
2013	Awajishima Island	6.3	The crustal earthquake with revers faults adjacent to the focal area of the 1995 Hyogoken Nanbu Earthquake. 35 injured, 8 houses collapsed and 101 partially destroyed. The maximum I _s was 6- (Awaji-shi, Hyogo).

Reference: National Astronomical Observatory of Japan, Chronological Scientific Tables, Maruzen, (2017) *partially extracted

Seismic Hazard Information of J-SHIS

J-SHIS is a Web service by NIED, to help prevent and prepare for earthquake disaster by providing a public portal for seismic hazard information across Japan.

I_s Distribution of 2% Probability of Exceedance in 50 Years I_s Distribution of Return Period of 50,000-year

